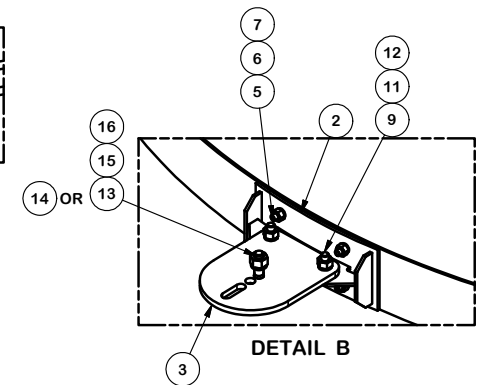
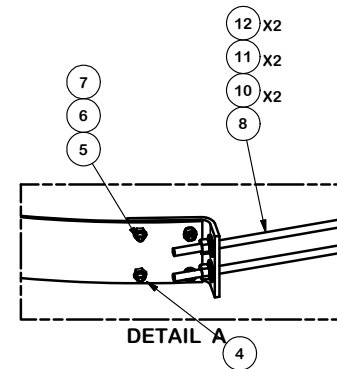


PARTS LIST						
ITEM	QTY	PART NO.	PART DESCRIPTION	LENGTH	UNIT WT.	NET WT.
1	6	X-114178	CHIMNEY STRAP		37.01	222.07
2	6	X-115582	ANTENNA MOUNTING PLATE		9.42	56.53
3	6	X-RCMSFIP	RCM SECTOR FRAME INTERFACE PLATE	8 1/4 in	13.73	82.36
4	12	X-114170	FORMED END PLATE	9 in	5.84	70.02
5	72	CB12112	1/2" X 1-1/2" CARRIAGE BOLT		0.13	9.29
6	72	G12LW	1/2" HDG LOCKWASHER	1/8 in	0.01	1.00
7	72	G12NUT	1/2" HDG HEAVY 2H HEX NUT		0.07	5.16
8	12	G58R-36	5/8" x 36" THREADED ROD (HDG.)		3.14	37.63
9	12	G5802	5/8" x 2" HDG HEX BOLT GR5		0.27	3.24
10	24	G58FW	5/8" HDG USS FLATWASHER	1/8 in	0.07	1.69
11	36	G58LW	5/8" HDG LOCKWASHER		0.03	0.94
12	36	G58NUT	5/8" HDG HEAVY 2H HEX NUT		0.13	4.68
13	6	A34234	3/4"-10 X 2-3/4" A325 BOLT WITH 1-3/8" THREAD	2 3/4 in	0.54	3.22
14	6	A34212	3/4" x 2-1/2" UNC HEX BOLT (A325)	2 1/2 in	0.48	2.87
15	6	G34LW	3/4" HDG LOCKWASHER		0.04	0.26
16	6	G34NUT	3/4" HDG HEAVY 2H HEX NUT		0.21	1.27
					TOTAL WT. #	455.65



#### TOLERANCE NOTES

TOLERANCES ON DIMENSIONS, UNLESS OTHERWISE NOTED ARE:  
 SAWED, SHEARED AND GAS CUT EDGES ( $\pm 0.030"$ )  
 DRILLED AND GAS CUT HOLES ( $\pm 0.030"$ ) - NO CONING OF HOLES  
 LASER CUT EDGES AND HOLES ( $\pm 0.010"$ ) - NO CONING OF HOLES  
 BENDS ARE  $\pm 1/2$  DEGREE  
 ALL OTHER MACHINING ( $\pm 0.030"$ )  
 ALL OTHER ASSEMBLY ( $\pm 0.060"$ )

PROPRIETARY NOTE:  
 THE DATA AND TECHNIQUES CONTAINED IN THIS DRAWING ARE PROPRIETARY INFORMATION OF VALMONT INDUSTRIES AND CONSIDERED A TRADE SECRET. ANY USE OR DISCLOSURE WITHOUT THE CONSENT OF VALMONT INDUSTRIES IS STRICTLY PROHIBITED.

#### DESCRIPTION

9' TO 11'  
 ROUND CHIMNEY MOUNT KIT

CPD NO.	DRAWN BY	ENG. APPROVAL
81	CEK 4/11/2017	BMC 5/9/2017
SUB	DRAWING USAGE	CHECKED BY
02	CUSTOMER	



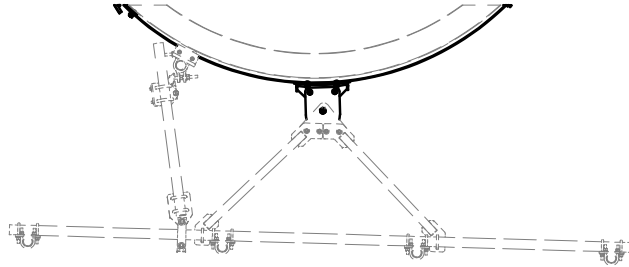
Engineering  
 Support Team:  
 1-888-753-7446

Locations:  
 New York, NY  
 Atlanta, GA  
 Los Angeles, CA  
 Plymouth, IN  
 Salem, OR  
 Dallas, TX

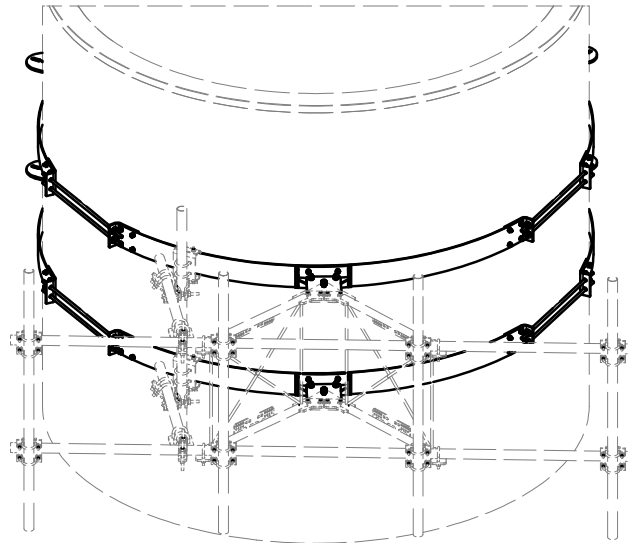
PART NO.	RCM911	PAGE
DWG. NO.	RCM911	1 OF 2

A	REPLACED X-RCMSIP WITH X-RCMSFIP	CEK	6/13/2019
REV	DESCRIPTION OF REVISIONS	CPD	BY DATE
REVISION HISTORY			

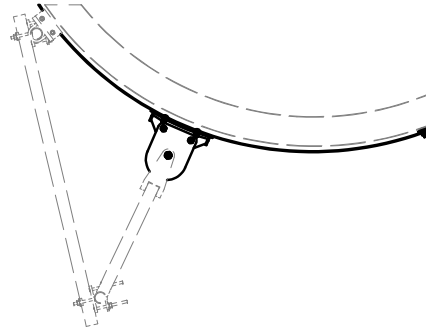
## SECTOR FRAMES



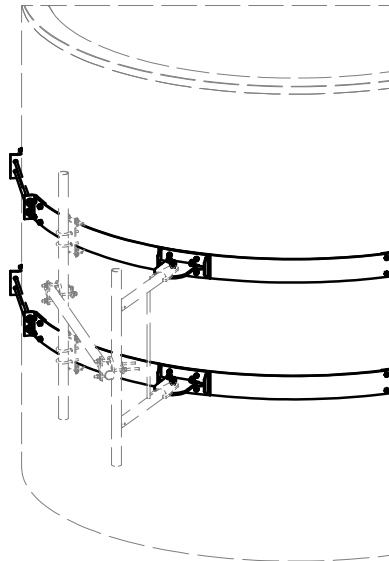
VFAxx-SD  
VFAxx-HD



## PIVOT SIDE ARMS



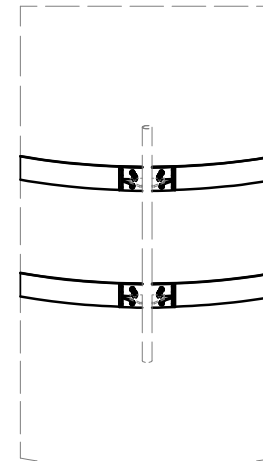
PSA6  
PSA3



## FIXED PIPEMOUNTS



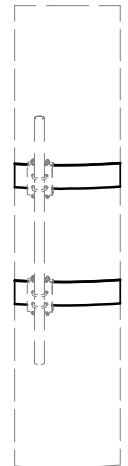
X-B1161 - 2-3/8" O.D. X 60" PIPE - STRAIGHT  
X-B965 - 4-1/2" O.D. X 60" PIPE - STRAIGHT  
X-B967 - 4-1/2" O.D. X 60" PIPE - TAPERED



## ADJUSTABLE PIPE MOUNTS



RC-PM23 &  
2-3/8" O.D. PIPE



## TOLERANCE NOTES

TOLERANCES ON DIMENSIONS, UNLESS OTHERWISE NOTED ARE:  
SAWED, SHEARED AND GAS CUT EDGES ( $\pm 0.030"$ )  
DRILLED AND GAS CUT HOLES ( $\pm 0.030"$ ) - NO CONING OF HOLES  
LASER CUT EDGES AND HOLES ( $\pm 0.010"$ ) - NO CONING OF HOLES  
BENDS ARE  $\pm 1/2$  DEGREE  
ALL OTHER MACHINING ( $\pm 0.030"$ )  
ALL OTHER ASSEMBLY ( $\pm 0.060"$ )

PROPRIETARY NOTE:  
THE DATA AND TECHNIQUES CONTAINED IN THIS DRAWING ARE PROPRIETARY INFORMATION OF VALMONT INDUSTRIES AND CONSIDERED A TRADE SECRET. ANY USE OR DISCLOSURE WITHOUT THE CONSENT OF VALMONT INDUSTRIES IS STRICTLY PROHIBITED.

## DESCRIPTION

9' TO 11'  
ROUND CHIMNEY MOUNT KIT

CPD NO.

DRAWN BY

ENG. APPROVAL

CLASS  
81

SUB  
02

DRAWING USAGE  
CUSTOMER

CHECKED BY

BMC 5/9/2017

PART NO.

RCM911

DWG. NO.

RCM911



Engineering  
Support Team:  
1-888-753-7446

Locations:  
New York, NY  
Atlanta, GA  
Los Angeles, CA  
Plymouth, IN  
Salem, OR  
Dallas, TX

REV	DESCRIPTION OF REVISIONS	CPD	BY	DATE
A	REPLACED X-RCMSIP WITH X-RCMSFIP		CEK	6/13/2019
REVISION HISTORY				